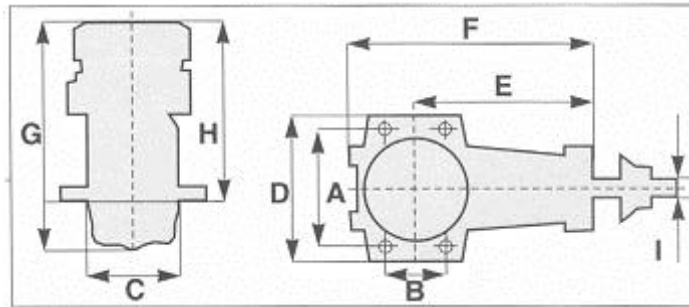


Tabella Dimensioni Motori



Millimetri

Engine	A	B	C	D	E	F	G	H	I
G34 RING R/C	38	15	30	45	54	73	76	61	UNF 1/4" x 28
GS 40 RING R/C	42	19	34	50	58	80	84	67,5	UNF 1/4" x 28
GS45 ABC R/C	42	19	34	50	58	83	85	68	UNF 1/4" x 28
G51 RING CL	42	19	34	50	58	80	87	70	UNF 1/4" x 28
G51 RING R/C	42	19	34	50	58	80	87	70	UNF 1/4" x 28
G61 RING	50	20	42	60	69	97	104	81	UNF 5/16 X 24
G61 ABC R/C	50	20	42	60	69	97	104	81	UNF 5/16 X 24
G75 RING R/C	50	20	42	60	69	97	105	82	UNF 5/16 X 24
G90 RING R/C	50	20	42	60	69	97	108	85	UNF 5/16 X 24
G3250 R/C	64	23	54	73	97	142	137	110	M10 X 1,25
G4500 R/C	74	30	62	86	95	165	152	120	M10 X 1,25
TWIN 60 INLINE R/C	64	103,5	54	73	89	215	137	110	M10 X 1,25

Copyright © 2000-2003 Hobbico, Inc.-Safalero s.r.l.

All rights reserved. Do not duplicate or redistribute in any form.

Tutti I diritti riservati. Non duplicare o ridistribuire in qualunque forma.